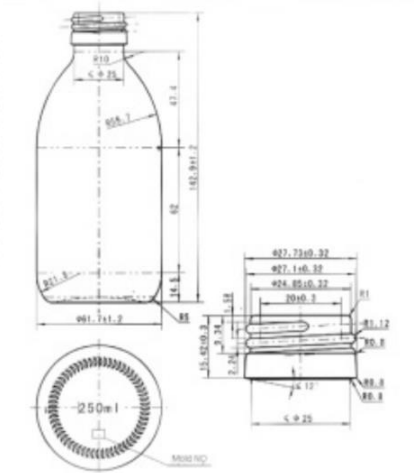


Bottle Specifications

CAD/Engineering Drawings



Sample Photo



Detailed Specifications



Quantity

How many items are to be manufactured?



Material

What type of materials are used to manufacture the product?
Be specific with the raw components needed.



Measurements

What is the size of your product?
What are physical attributes that suppliers need to account for?

Artwork Specs

Additional details like whether artwork uses silkscreen or pad printing (straight on bottle), how many print passes and number of colors, etc.

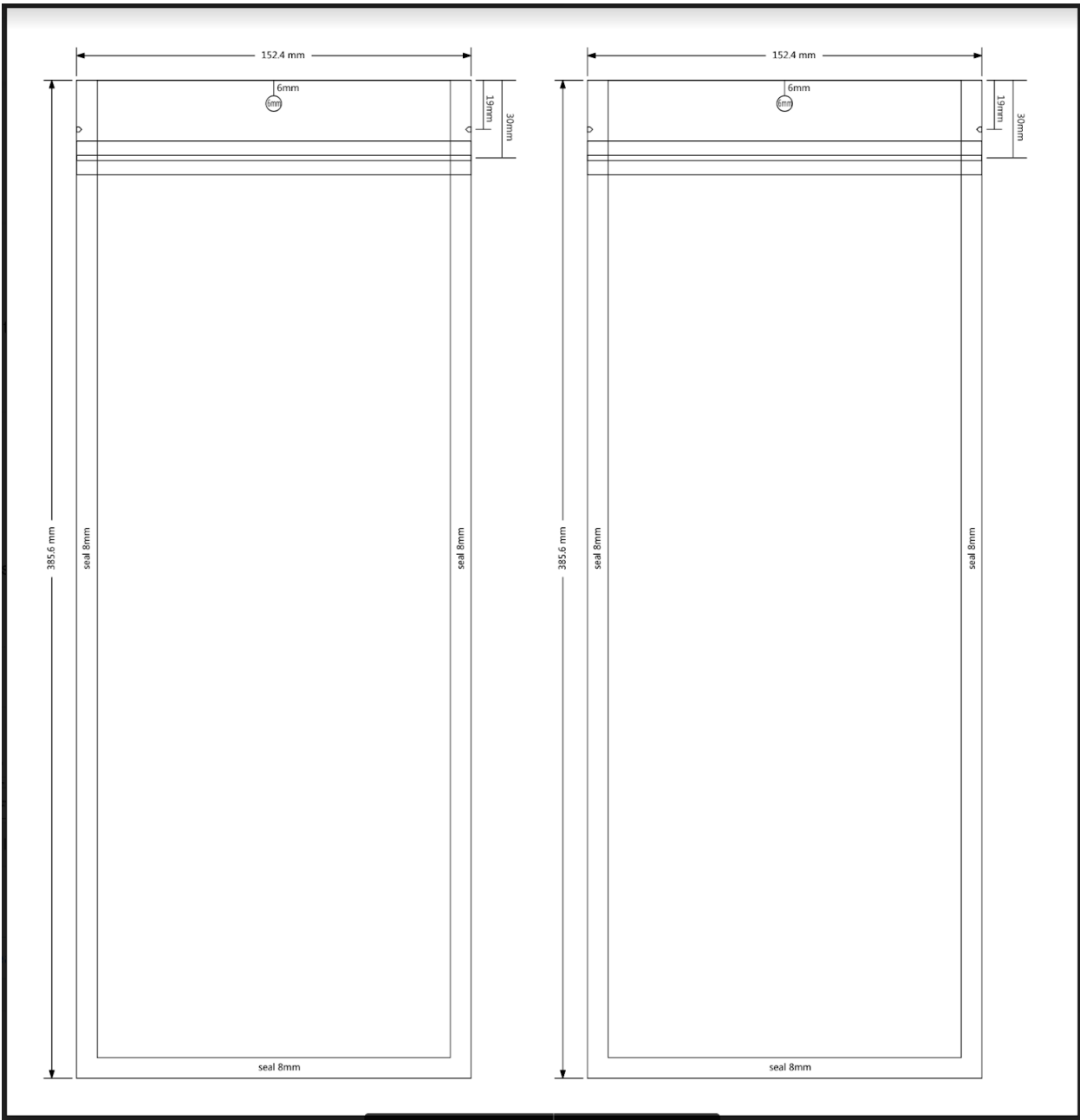
PANTONE
2617 C

Nice to have:

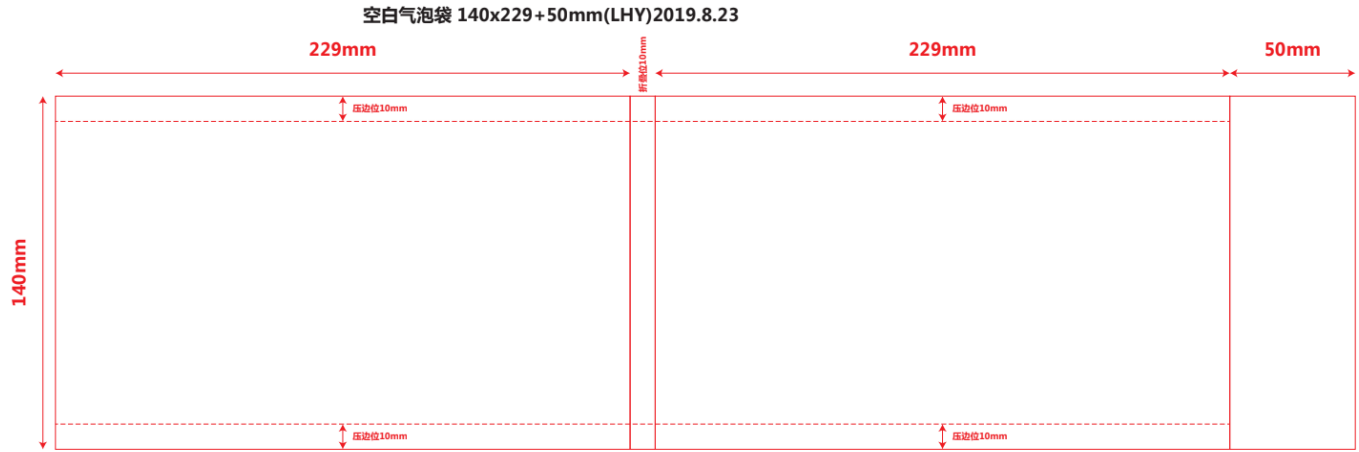
Actual Photos

Photos of the product as it currently exists can be useful.

Dielines for Mylar Bag



Dielines of a bubble mailer



Dielines of a shipper box

